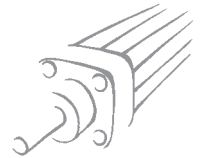


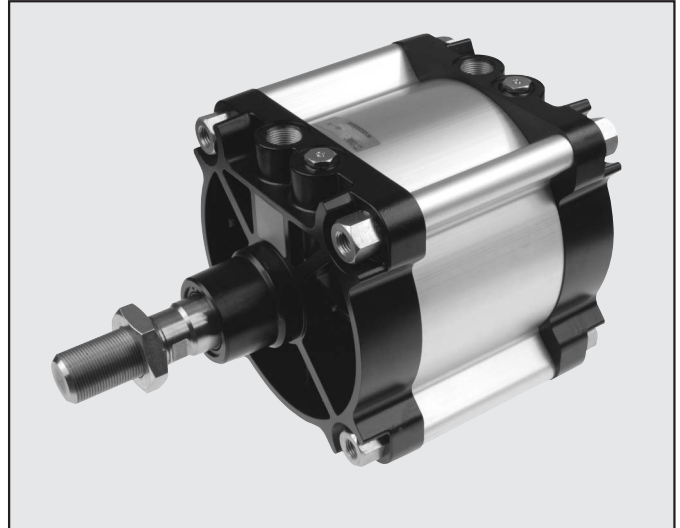
# CYLINDER SERIES ISO 6431 VDMA, Ø 160-200 mm



1

Cylinders made to ISO 6431 available in various versions and with a wide range of accessories:

- Configuration with or without magnet
- Double-acting – single- or through-rod
- NBR gaskets
- Special configurations on request



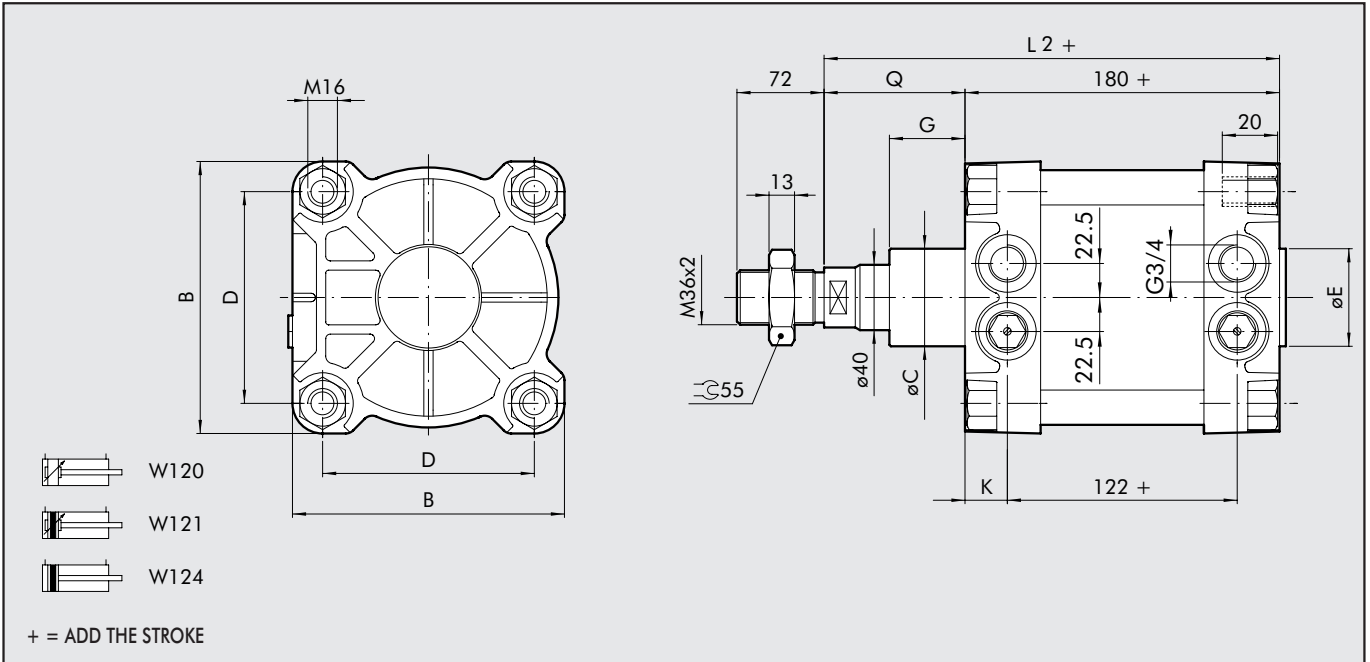
## TECHNICAL DATA

Operating pressure	P	max 10 bar (1 MPa)
Temperature range	T <sub>e</sub>	-10°C to +70°C
Fluid temperature	T <sub>f</sub>	-10°C to +70°C
Design		Profile with internal tie rods
Materials		Heads: die cast aluminium
		Piston rod: thick chromed steel
		Jacket: aluminium
		Piston: aluminium with PTFE guide belt
		Gaskets: NBR
Forces generated at 6 bar (tensile stress)		See GENERAL TECHNICAL DATA PAGE 1.1/05
Standard strokes	mm	25-50-75-80-100-125-150-200-250-300-350-400-500-600-700-800-900-1000
Weight		See GENERAL TECHNICAL DATA PAGE 1.1/06

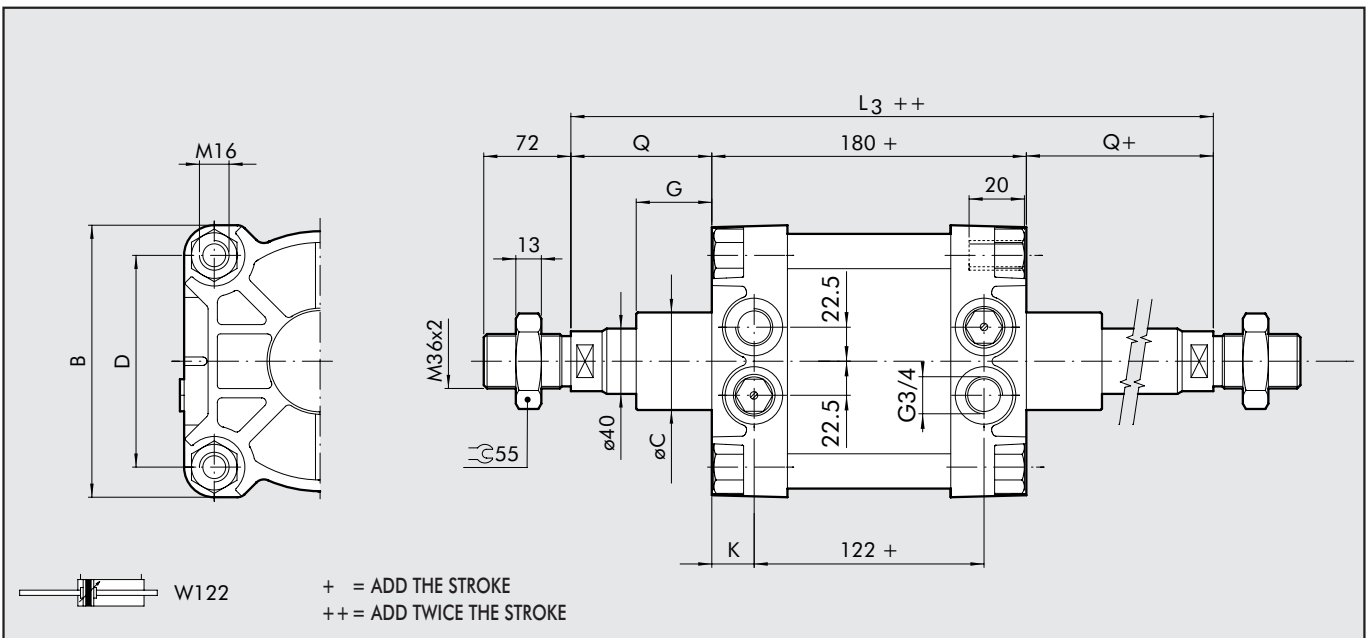
## KEY TO CODES

CYL	W	1	2	1	1	6	0	0	0	5	0	
	TYPE				DIAMETER-EXECUTION			STROKE				
	W120	Double-acting, cushioned, non magnetic				160				0025 ÷ 2800 mm		
	W121	Double-acting cylinder, cushioned				200						
	W122	Double-acting cylinder, cushioned, through-rod				AA3	160+intermediate hinge					
	W124	Double-acting cylinder, non-cushioned				AA4	200+intermediate hinge					
						XA3	160 stainless steel piston rod					
						XA4	200 stainless steel piston rod					

### DIMENSIONS OF STANDARD VERSION



### DIMENSIONS OF THROUGH-ROD VERSION



Ø	B	Ø C	Ø E	D	G	L <sub>2</sub>	L <sub>3</sub>	Q	K
160	180	65	65	140	50	259	338	79	28
200	220	75	75	175	60	275	370	95	29



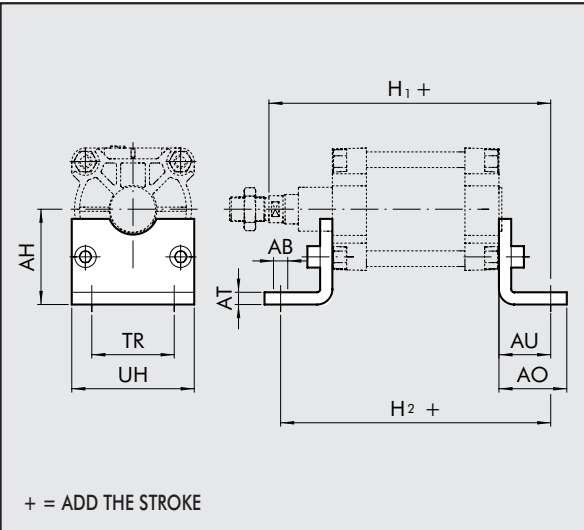
## ACCESSORIES: FIXINGS

### LEGS - MODEL A

Code	Ø	AB	AH	AO	AT	AU	H <sub>1</sub>	H <sub>2</sub>	TR	UH	Weight [g]
------	---	----	----	----	----	----	----------------	----------------	----	----	------------

W0951602001	160	18	115	80	10	60	319	300	115	180	2400
W0952002001	200	22	135	120	10	70	345	320	135	220	4000

Note: Individually packed with 2 screws.

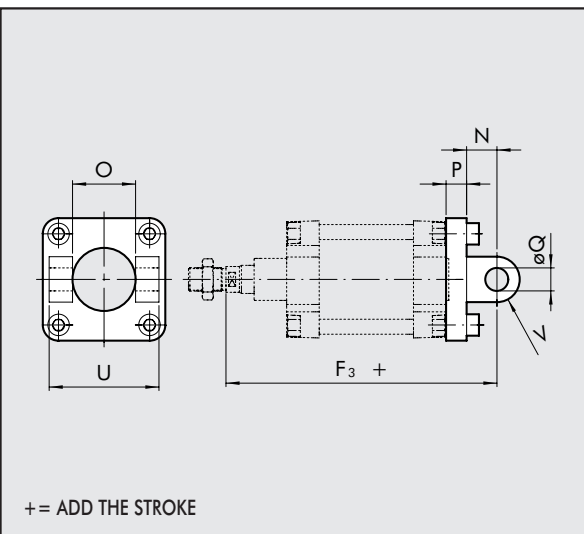


### FEMALE HINGE - MODEL B

Code	Ø	U	O	ØQ	P	N	F <sub>3</sub>	V	Weight [g]
------	---	---	---	----	---	---	----------------	---	------------

W0951602003	160	170	90	30	20	35	314	30	3500
W0952002003	200	170	90	30	20	40	335	30	6000

Note: Supplied complete with 4 screws, 4 washers, 2 snap rings.

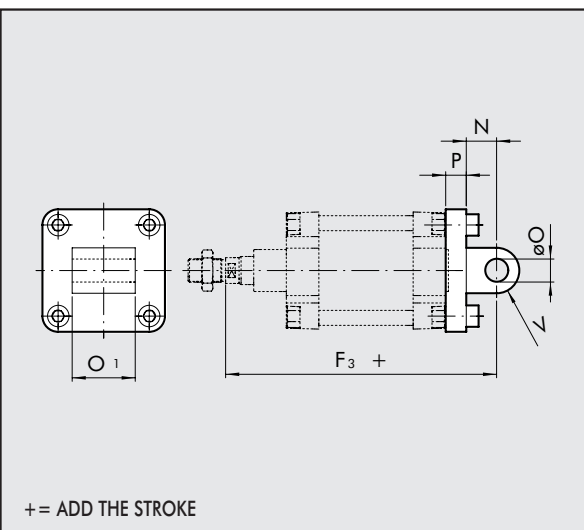


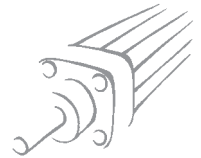
### MALE HINGE - MODEL BA

Code	Ø	O <sub>1</sub>	ØO	P	N	F <sub>3</sub>	V	Weight [g]
------	---	----------------	----	---	---	----------------	---	------------

W0951602004	160	90	30	20	35	314	30	2600
W0952002004	200	90	30	20	40	335	30	4500

Note: Supplied complete with 4 screws, 4 washers.



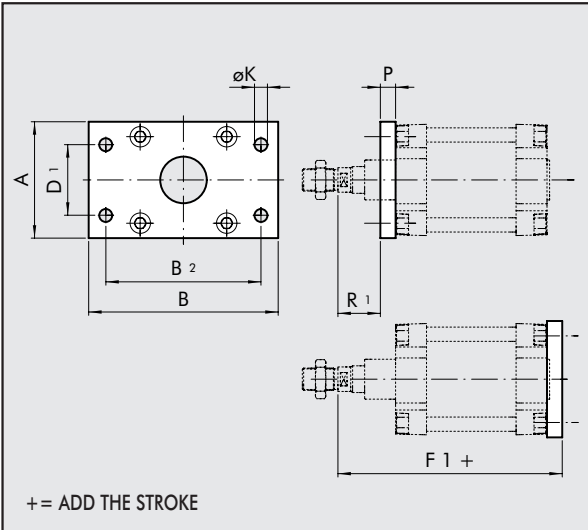


**FLANGE - MODEL C**

Code	Ø	A	B	B <sub>2</sub>	D <sub>1</sub>	ØK	R <sub>1</sub>	P	F <sub>1</sub>	Weight [g]
------	---	---	---	----------------	----------------	----	----------------	---	----------------	------------

W0951602002	160	180	270	230	115	18	59	20	279	6900
W0952002002	200	225	312	270	135	22	70	25	300	12800

Note: Individually packed with 4 screws.

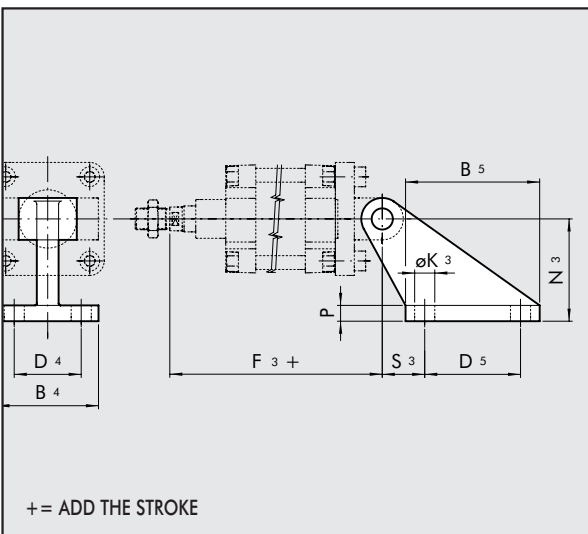


**CETOP COUNTER-HINGE - MODEL GL**

Code	Ø	B <sub>4</sub>	B <sub>5</sub>	D <sub>4</sub>	D <sub>5</sub>	N <sub>2</sub>	N <sub>3</sub>	S <sub>3</sub>	ØK <sub>3</sub>	P	F <sub>3</sub>	Weight [g]
------	---	----------------	----------------	----------------	----------------	----------------	----------------	----------------	-----------------	---	----------------	------------

W0951602008	160	110	154	63	110	55	140	50	18	20	314	2300
W0951602008	200	110	154	63	110	60	140	50	18	20	335	2300

Note: Supplied complete with 4 screws, 4 washers.

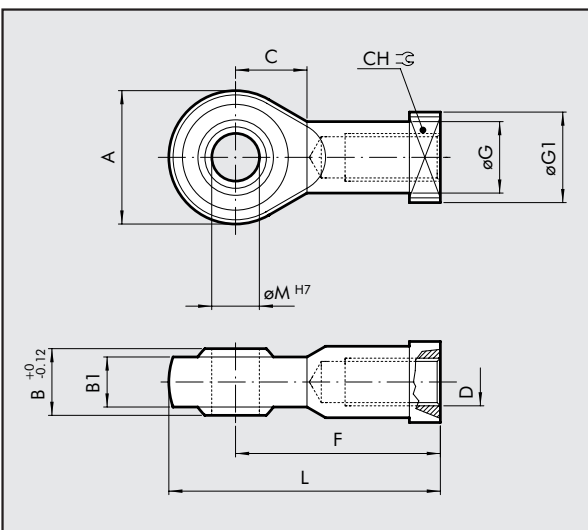


**ARTICULATED JOINT - MODEL GA-M**

Code	Ø	ØM	C	B <sub>1</sub>	B	A	L	F	D	ØG	CH	ØG <sub>1</sub>	Weight [g]
------	---	----	---	----------------	---	---	---	---	---	----	----	-----------------	------------

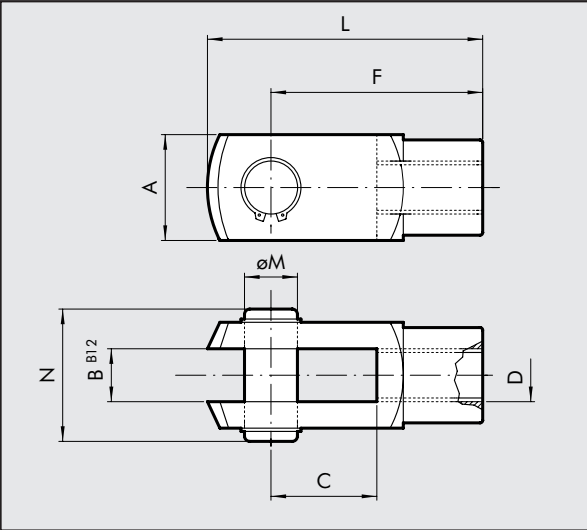
W0952002025	160	35	41	28	43	80	165	125	M36x2	46	50	58	1645
W0952002025	200	35	41	28	43	80	165	125	M36x2	46	50	58	1645

Note: Individually packed



**FORK FOR PISTON ROD - MODEL GK-M**

Code	Ø	ØM	C	B	A	L	F	D	N	Weight [g]
------	---	----	---	---	---	---	---	---	---	------------

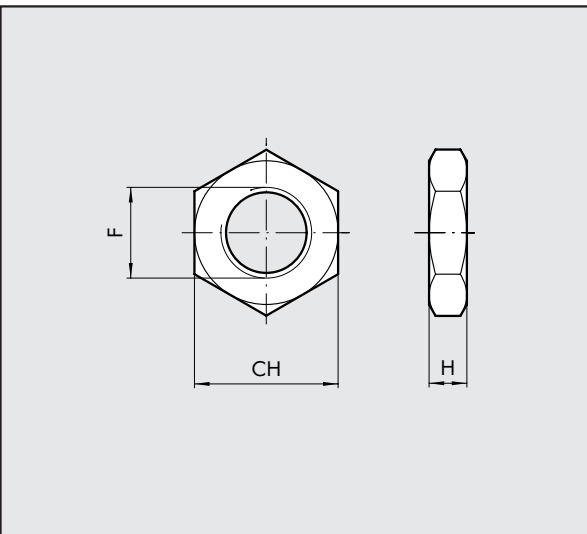


W0951602020	160	35	72	35	70	188	144	M36x2	84	3850
W0951602020	200	35	72	35	70	188	144	M36x2	84	3850

Note: Individually packe

**NUT FOR PISTON ROD - MODEL S**

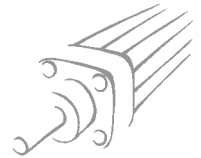
Code	Ø	F	H	CH	Weight [g]
------	---	---	---	----	------------



W0951602010	160	M36x2	13	55	170
W0951602010	200	M36x2	13	55	170

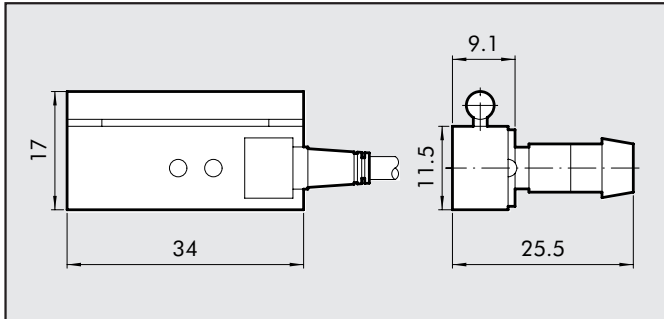
Note: Individually packe

**NOTES**

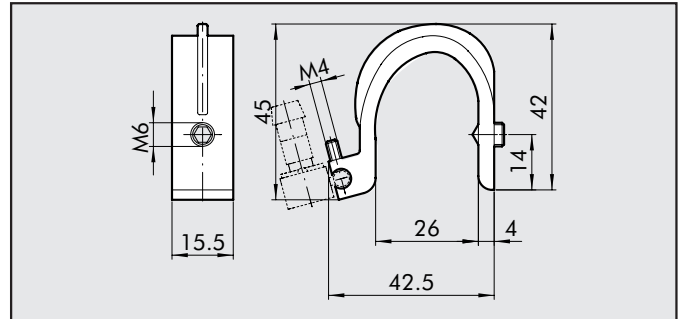


# ACCESSORIES: MAGNETIC SENSORS

## MAGNETIC SENSOR



## SENSOR BRACKET Ø 160



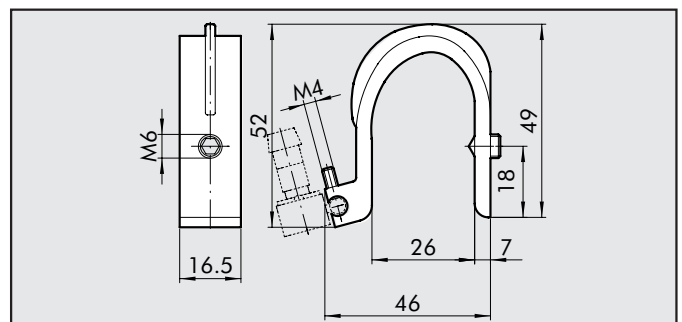
## ORDERING CODES

Code	Description
<b>MAGNETIC PROXIMITY SENSORS</b>	
W0950000201	REED SENSOR ACC. DSM2-C525
W0950000222	E.HALL PNP SENSOR ACC. DSM3-N225
W0950000232	E.HALL NPN SENSOR ACC. DSM3-M225

### SENSOR BRACKET

W0950000715	BRACKET ACC. ST160
W0950000716	BRACKET ACC. ST200

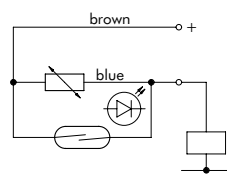
## SENSOR BRACKET Ø 200



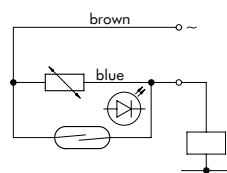
## TECHNICAL DATA

Type		REED+VARISTOR+LED 2 wires	HALL VERSION PNP/NPN 3 wires
Contact		REED+VARISTOR+LED NO	HALL EFFECT NO PNP/NPN
Max AC/DC voltage	V	3÷48 (DC); 3÷220 (AC)	6-24 V DC
Max current at 25°C	mA	1000	250
Power with inductive load	VA	10	-
Power with resistive load	Watt	50	6
Switch-on time	m sec	1.2	0.8
Switch-off time	m sec	0.1	3
Switch-on point	Gauss	110	15
Switch-off point	Gauss	95	8
Operating life	-	10 <sup>7</sup> impulses	10 <sup>9</sup> impulses
Contact resistance		0.1	-
Cable length	m	2.5	2.5
Cable cross section	mm <sup>2</sup>	0.35	0.35
Cable material		Soft PVC	Soft PVC
Circuit			

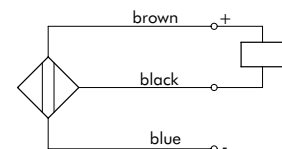
### DC



### AC



### Version NPN



### Version PNP

