

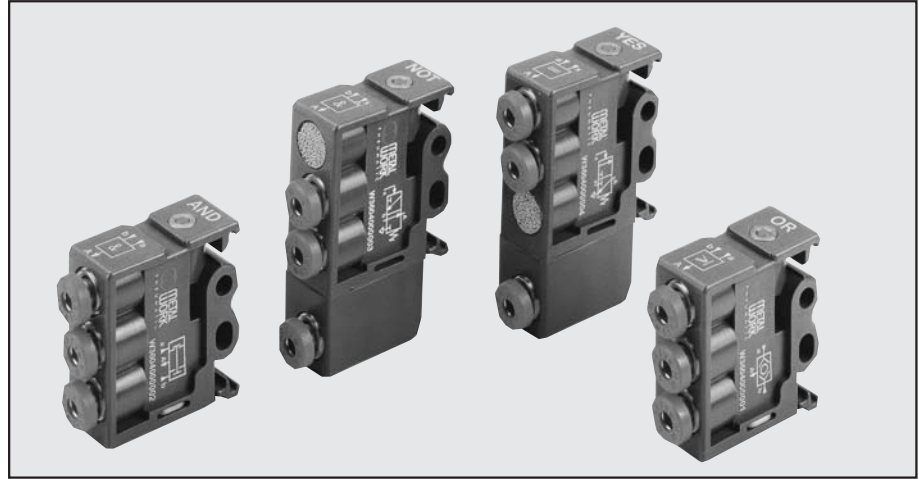


PNEUMATIC LOGIC

Metal Work logic elements are available with 5 different functions: OR, AND, NOT, YES, MEMORY.

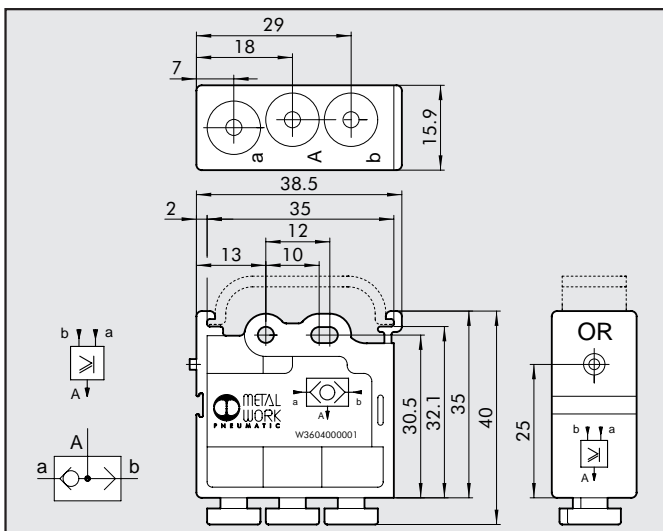
Main features common to all elements:

- Adaptor for Ω bar (DIN EN 50022) integral with the body.
- Built-in pressure indicator.
- Pipe locking system using $\varnothing 4$ built-in fittings.



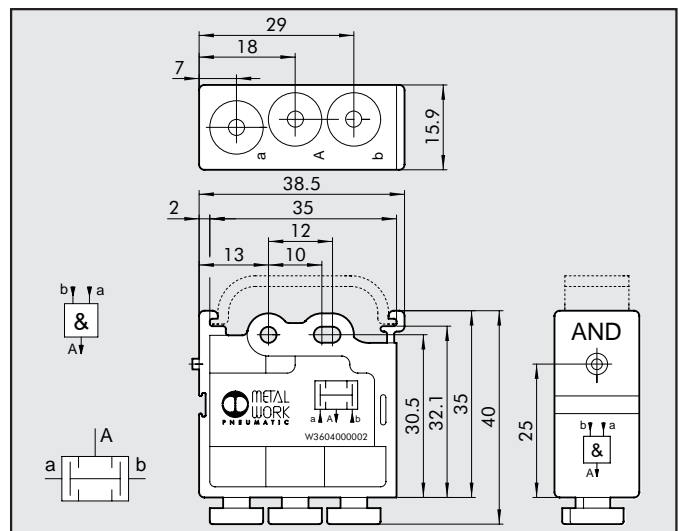
| TECHNICAL DATA | AND - OR - YES - NOT - MEMORY |
|--|---|
| Operating temperature | $-10 \div +60^{\circ}\text{C}$ ($14^{\circ} \div 140^{\circ}\text{F}$) |
| Valve fitting | Push-in fitting for $\varnothing 4$ pipe |
| Pressure range | OR - AND: from 1.5 to 8 bar YES-NOT -MEMORY: from 0 to 8 bar, pilot pressure from 1.5 to 8 bar NOT: 6 bar switching threshold = 0.4 |
| Nominal diameter | 2.7 mm |
| Flow rate at 6 bar (0.6 MPa \div 87 psi) | 100 NI/min |
| ΔP 1 bar (0.1 Mpa \div 14.5 psi) | |
| Fluid | Lubricated or unlubricated filtered compressed air; must be uninterrupted when lubricated |
| Recommended lubricant | ISO e UNI FD22 |
| Actionment | Via compressed air |
| Reset | AND-OR: via compressed air/YES-NOT via mechanical spring MEMORY: via compressed air. |
| Installation | In any position |
| Mounted | On Omega bar (DIN EN 50022) size 35x7 or 35x15 Wall-mounted with $\varnothing 4.2$ holes |
| Body | Technopolymer |
| Spool | Aluminium |
| Seal | NBR (FKM/FPM on request) |

LOGIC ELEMENT: OR



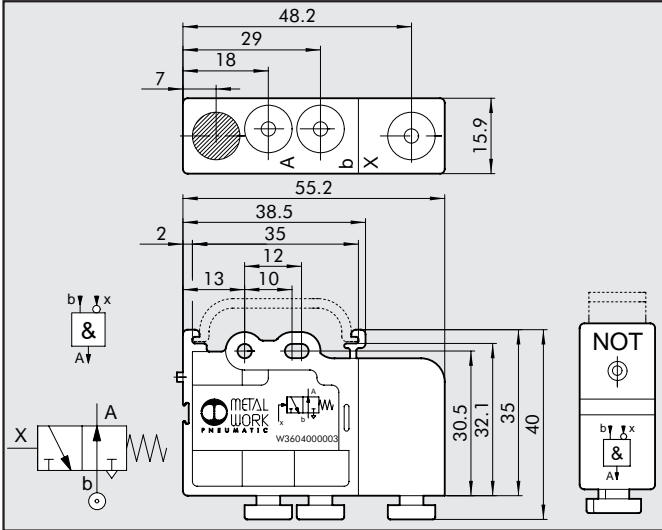
Code: W3604000001
Description: OR - LOGIC PRODUCT

LOGIC ELEMENT: AND



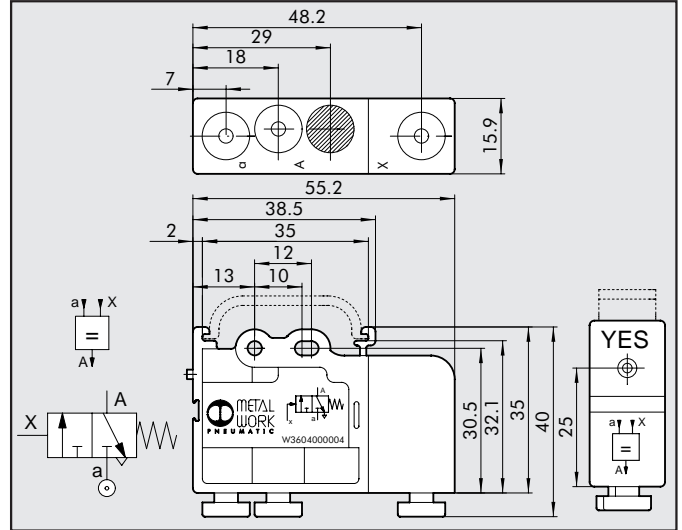
Code: W3604000002
Description: AND - LOGIC SUM

LOGIC ELEMENT: NOT



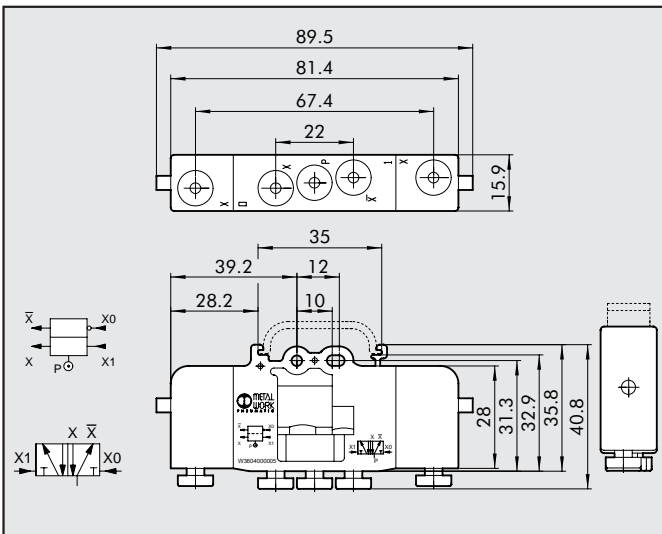
| Code | Description |
|-------------|----------------|
| W3604000003 | NOT - NEGATION |

LOGIC ELEMENT: YES



| Code | Description |
|-------------|-------------------|
| W3604000004 | YES - AFFIRMATION |

LOGIC ELEMENT: MEMORY



| Code | Description |
|-------------|-------------|
| W3604000005 | MEMORY |

NOTES

NOTES