

# CIRCUIT SELECTOR VALVES

## Series VOR



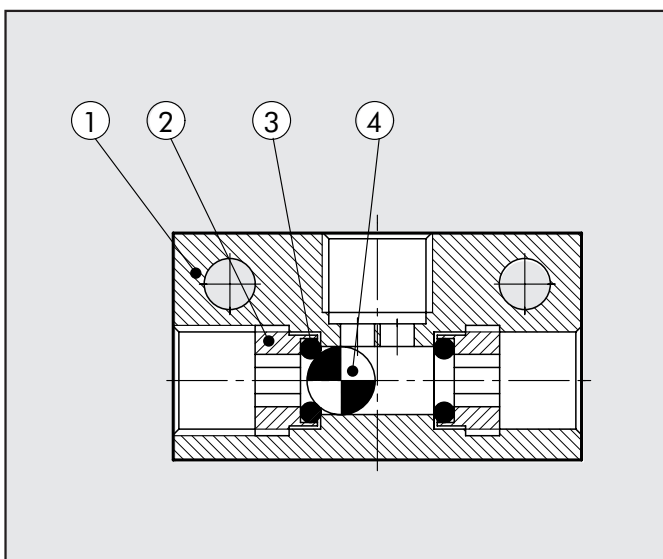
### CIRCUIT SELECTOR VALVES

Circuit selector valves select two separate input signal without creating reciprocal interference, giving a single output signal.



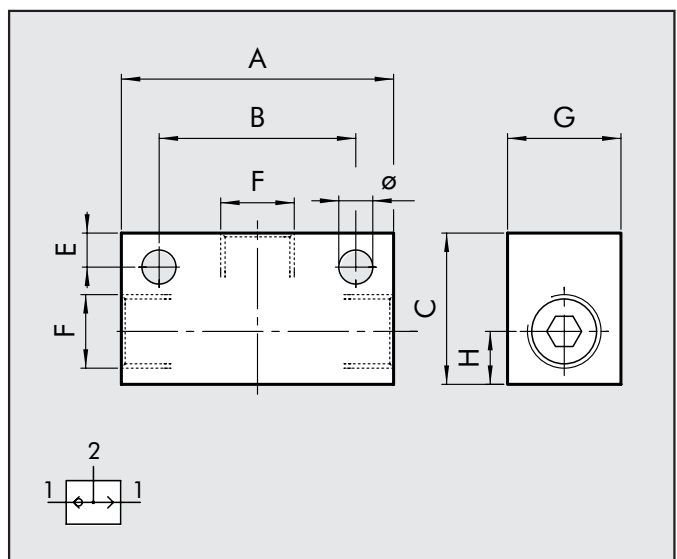
TECHNICAL DATA		1/8"	1/4"
Nominal flow rate at 6.3 bar $\Delta P$ 1 bar	NI/min	400	1300
Operating temperature range	$^{\circ}C$	-10° to 80°	
Operating pressure	bar	14° to 176°	
	MPa	2 to 10	
Fluid		0,2 to 1	
		Lubricated or unlubricated filtered air	

### COMPONENTS



- ① Body: anodized aluminium
- ② Insert: brass
- ③ Seal: NBR
- ④ Ball: technopolymer

### DIMENSIONS AND ORDERING CODES



Code	Descript.	A	C	G	H	E	B	F	$\varnothing$
W3603000001	VOR 1/8	36	20	15	7.5	4	25	G 1/8	4.5
W3603000002	VOR 1/4	43	25	20	8.5	6.5	25	G 1/4	4.5