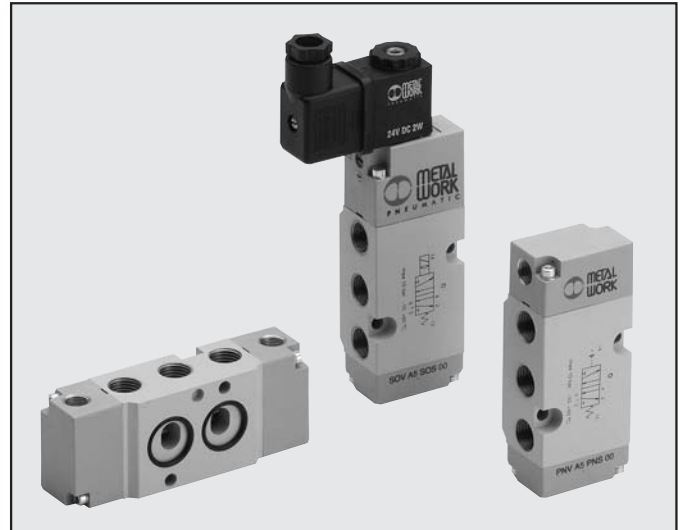


NAMUR VALVES

TECHNICAL DATA

Operating pressure	
• Monostable, electric	2.5 ÷ 10 bar
• Bistable, electric	1 ÷ 10 bar
• pilot-assisted, electric	vacuum at 10 bar
Minimum pilot pressure	
• monostable, pneumatic	2.5 bar
• bistable, pneumatic	1 bar
Operating temperature range	-10° to 60°C
Nominal diameter	7.5 mm
Conductance C	264.26 NL/min · bar
Critical ratio b	0.27 bar/bar
Flow rate at 6 bar ΔP 0.5 bar	750 NL/min
Flow rate at 6 bar ΔP 1 bar (0.1 Mpa ÷ 14.5 psi)	1100 NL/min
Response time at 6 bar:	
• TRA/TRR monostable, pneum. at 6 bar	7 ms / 15 ms
• TRA /TRR bistable, pneum. at 6 bar	7 ms / 7 ms
• TRA/TRR monostable, electric, at 6 bar	19 ms / 45 ms
• TRA /TRR bistable, electric, at 6 bar	21 ms / 21 ms

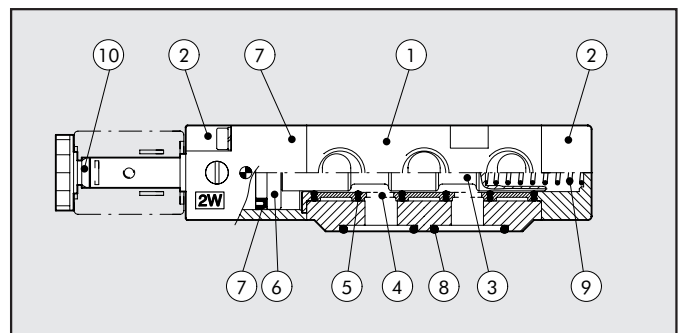


KEY TO CODES

P	N	V	A		5	P	N	S	O	O		
FAMILY			PORT		FUNCTION		OPERATORS 14		RESETTING 12		FURTHER DETAILS	
PNV	pneum.		A	Namur	4	4/2	PN	pneum.	S	mechanical spring	OO	5/2
SOV	electro-pneum.				5	5/2	SO	solenoid	B	bistable	NC	normally closed

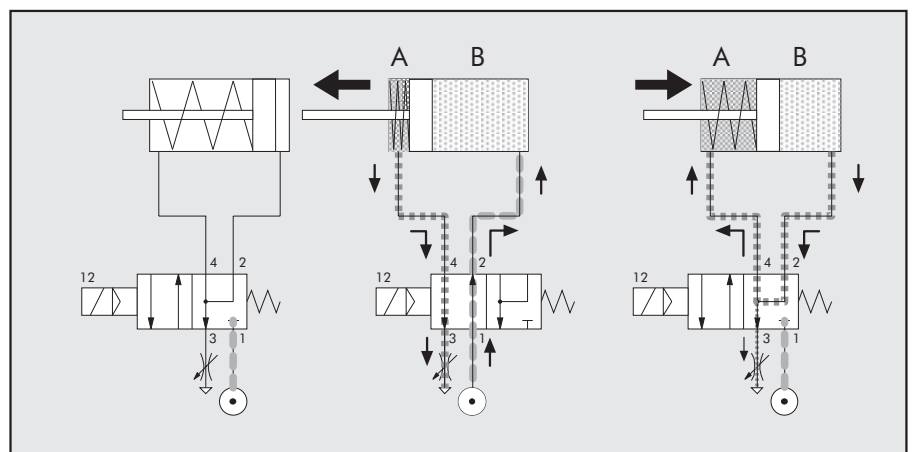
COMPONENTS

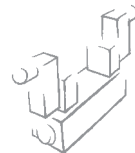
- ① VALVE BODY: Aluminium
- ② CONTROL/BASE: HOSTAFORM®
- ③ SPOOL: chemically nickel-plated aluminium
- ④ DISTANCE PLATES: plastic
- ⑤ GASKETS: NBR nitrile rubber
- ⑥ PISTONS: HOSTAFORM®
- ⑦ PISTON GASKET: NBR nitrile rubber
- ⑧ INTERFACE GASKETS: NBR nitrile rubber
- ⑨ SPRINGS: special steel
- ⑩ OPERATOR: Brass pipe – Stainless steel core



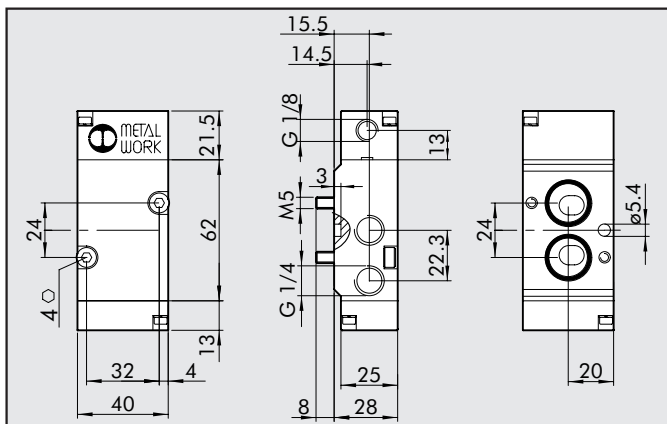
FUNCTIONING DIAGRAM 4/2 NAMUR VALVE

During the piston retraction stage, the air for chamber A is taken from the air leaving chamber B. This prevents the dirty air from getting in from the outside environment.



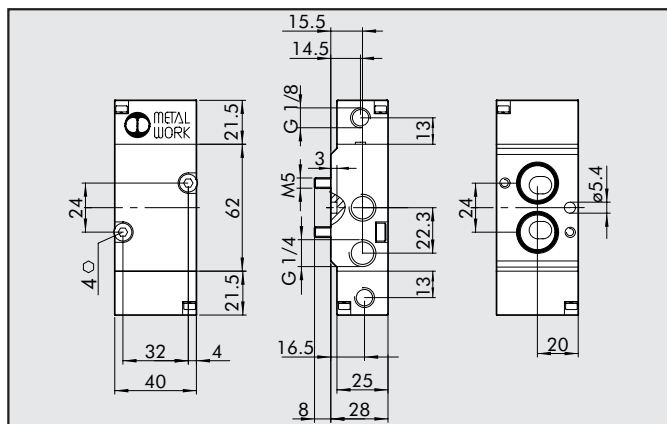


MONOSTABLE, PNEUMATIC 4/2



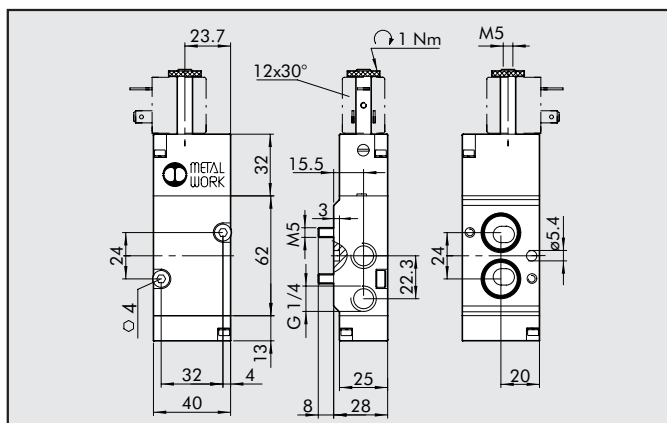
Symbol	Abbrev.	Code	Weight [g]
	PNV A4 PNS NC	7021010110	208

BISTABLE, PNEUMATIC 4/2



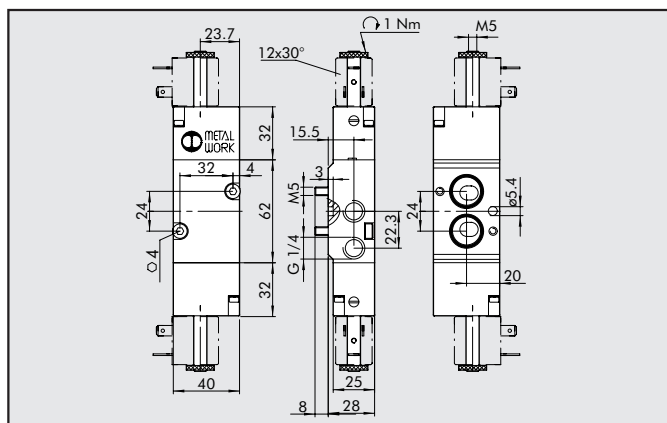
Symbol	Abbrev.	Code	Weight [g]
	PNV A4 PNB OO	7021010210	216

MONOSTABLE, SOLENOID/PNEUMATIC 4/2



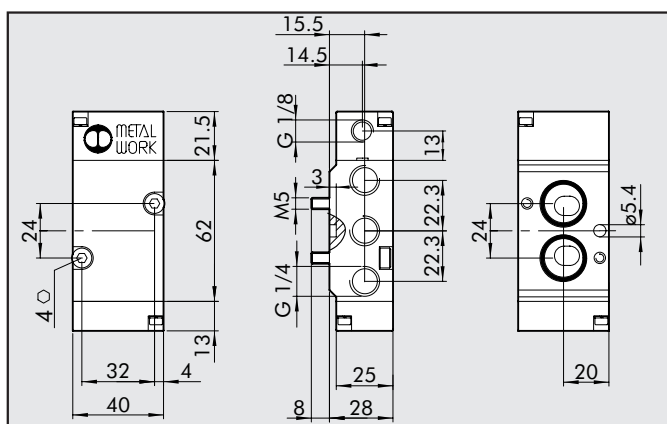
Symbol	Abbrev.	Code	Weight [g]
	SOV A4 SOS NC	7021020110	234

BISTABLE, SOLENOID/PNEUMATIC 4/2



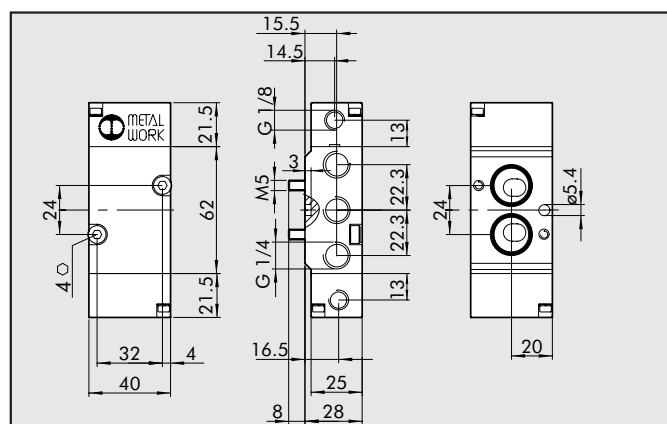
Symbol	Abbrev.	Code	Weight [g]
	SOV A4 SOB OO	7021020210	270

MONOSTABLE, PNEUMATIC 5/2



Symbol	Abbrev.	Code	Weight [g]
	PNV A5 PNS OO	7021010100	208

BISTABLE, PNEUMATIC 5/2



Symbol	Abbrev.	Code	Weight [g]
	PNV A5 PNB OO	7021010200	216

